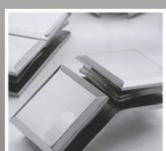




V-WIN

GLASS DOOR HARDWARE



V-WIN Hardware Products Factory

[Http://www.v-winss.cn](http://www.v-winss.cn)

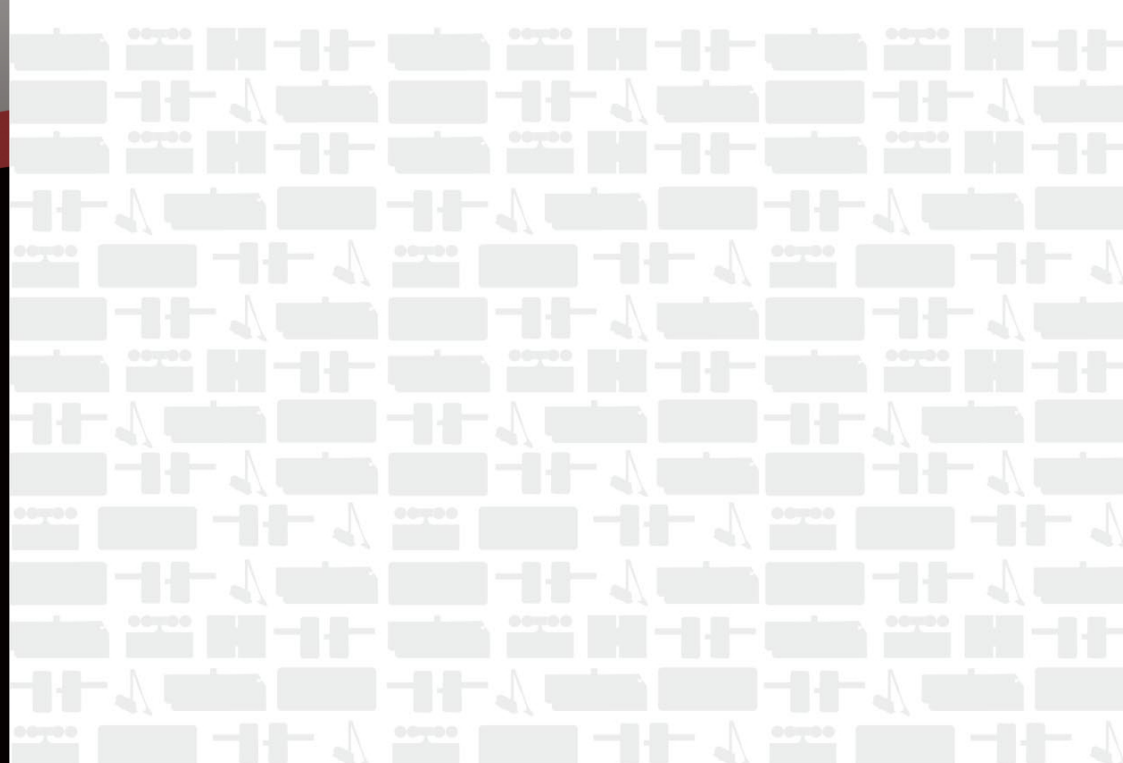
Email: info@v-winss.com

Mobile: +86 13829812992

Add: Jinli town Gaoyao city Guangdong China



柏力丰(建筑)配套工程五金



FLOOR SPRING
SERLES 地弹簧系列

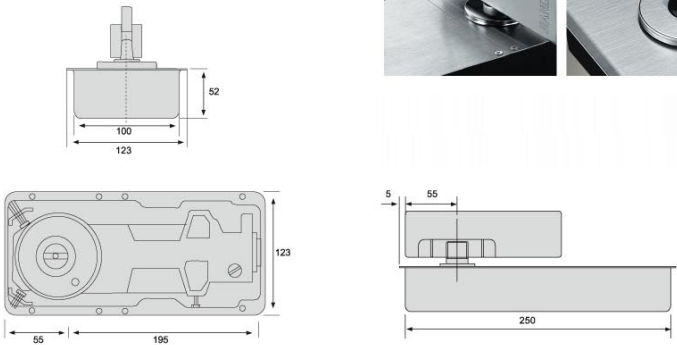
No.3



VW-FS-500

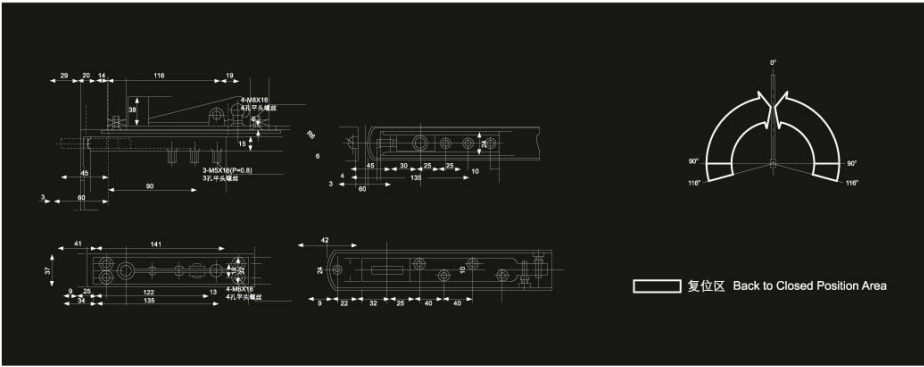


外观尺寸 Dimension of appearance



木门、铝合金门配件 Accessories for wooden doors and aluminum alloy doors

门扇调节 Door adjustment



技术数据 Technological data

功能特性 Feature	技术参数 Technological data	选项 Choice
闭门力量 Closing force	38Nm牛顿米	—
适合最大门宽 Suitable for maximum wide door leaf	(宽) 850X(高) 2200mm	—
最大门重 The maximum bearing weight	85kg	—
闭门速度以调节阀控制 The door closed speed is controlled by the adjusting valve	—	●
定位 Opening angle	90°	●
重量 Weight	—	—
底座尺寸 Container Size	长 Length	250mm
	宽 Width	123mm
	高 Height	52mm

FLOOR SPRING
SERLES 地弹簧系列

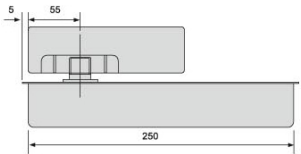
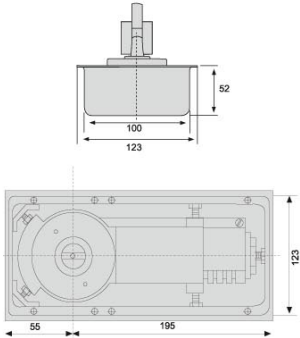
No.BF-600



VW-FS-600



外观尺寸 Dimension of appearance

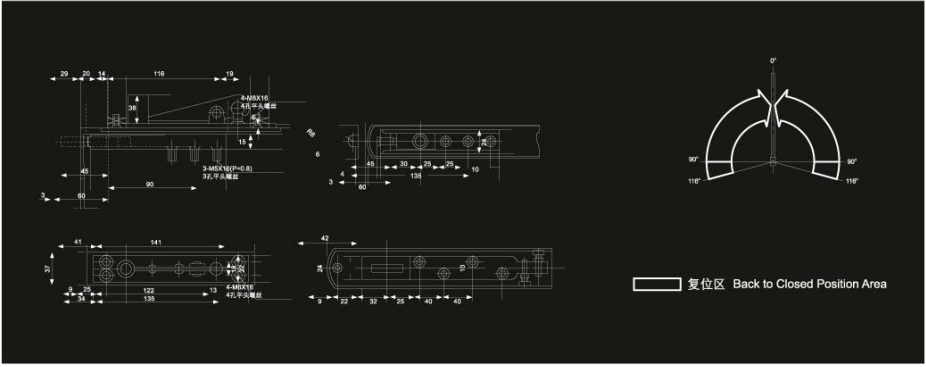


技术数据 Technological data

功能特性 Feature	技术参数 Technological data	选项 Choice
闭门力量 Closing force	38Nm牛·顿米	—
适合最大门宽 Suitable for maximum wide door leaf	(宽) 950X(高) 2000mm	—
最大门重 The maximum bearing weight	85kg	—
闭门速度以调节阀控制 The door closed speed is controlled by the adjusting valve	—	●
定位 Opening angle	90°	●
重量 Weight	—	—
底座尺寸 Container Size	长 Length	250mm
	宽 Width	123mm
	高 Height	52mm

木门、铝合金门配件 Accessories for wooden doors and aluminum alloy doors

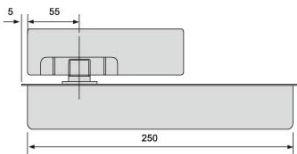
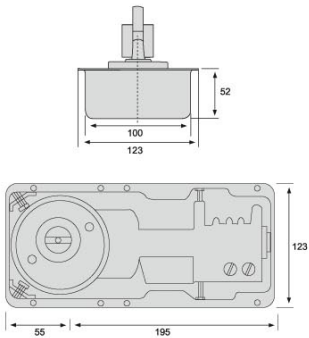
门扇调节 Door adjustment



VW-FS-700



外观尺寸 Dimension of appearance

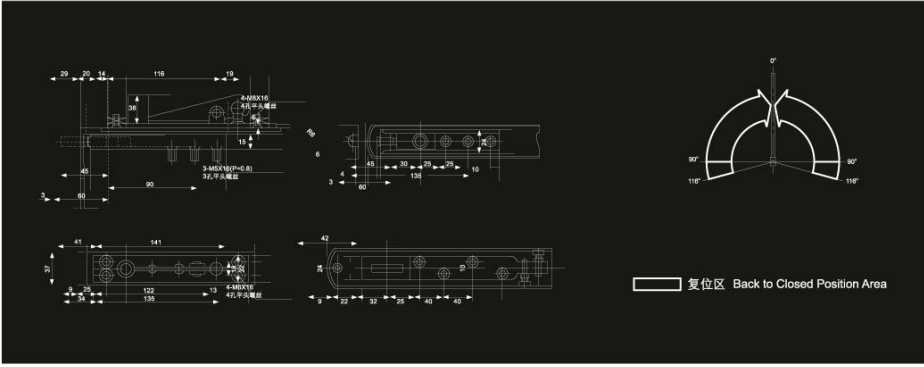


技术数据 Technological data

功能特性 Feature	技术参数 Technological data	选项 Choice
闭门力量 Closing force	38Nm牛·顿米	—
适合最大门宽 Suitable for maximum wide door leaf	(宽) 1000X(高) 2200mm	—
最大门重 The maximum bearing weight	95kg	—
闭门速度以调节阀控制 The door closed speed is controlled by the adjusting valve	—	●
定位 Opening angle	90°	●
重量 Weight	—	—
底座尺寸 Container Size	长 Length	250mm
	宽 Width	123mm
	高 Height	52mm

木门、铝合金门配件 Accessories for wooden doors and aluminum alloy doors

门扇调节 Door adjustment



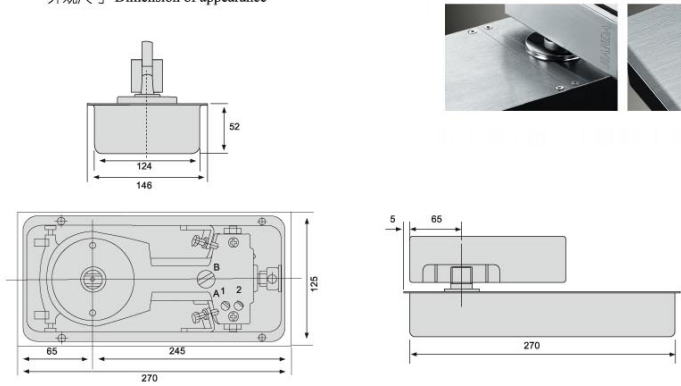
FLOOR SPRING
SERLES 地弹簧系列



VW-FS-800



外观尺寸 Dimension of appearance

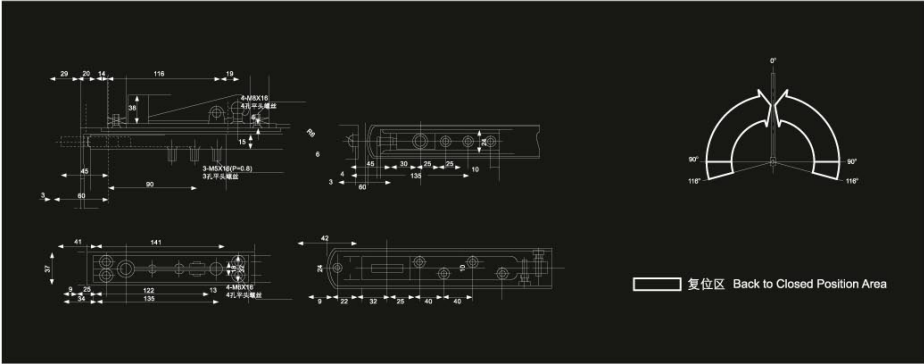


技术数据 Technological data

功能特性 Feature	技术参数 Technological data	选项 Choice
闭门力量 Closing force	38Nm牛·顿米	—
适合最大门宽 Suitable for maximum wide door leaf	(宽) 1100X(高) 2300mm	—
最大门重 The maximum bearing weight	125kg	—
闭门速度以调节阀控制 The door closed speed is controlled by the adjusting valve	—	●
定位 Opening angle	90°	●
重量 Weight	—	—
底座尺寸 Container Size	长 Length	270mm
	宽 Width	125mm
	高 Height	52mm

木门、铝合金门配件 Accessories for wooden doors and aluminum alloy doors

门扇调节 Door adjustment



FLOOR SPRING
SERLES 地弹簧系列

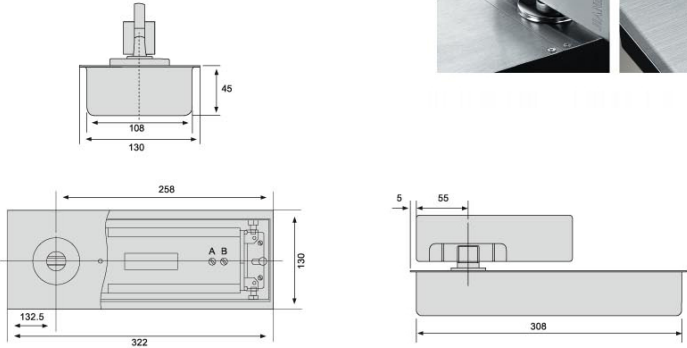
VW-FS-900



VW-FS-900



外观尺寸 Dimension of appearance

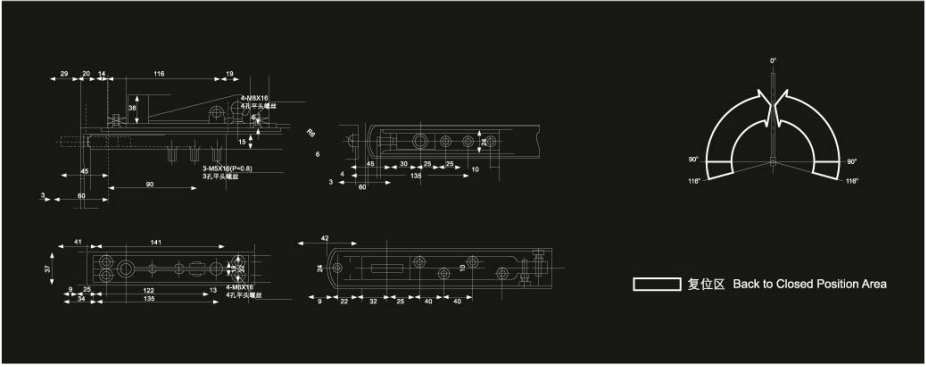


技术数据 Technological data

功能特性 Feature	技术参数 Technological data	选项 Choice
闭门力量 Closing force	38Nm牛·顿米	—
适合最大门宽 Suitable for maximum wide door leaf	(宽) 1200X(高) 2400mm	—
最大门重 The maximum bearing weight	100-150kg	—
闭门速度以调节阀控制 The door closed speed is controlled by the adjusting valve	—	●
定位 Opening angle	90°	●
重量 Weight	—	—
底座尺寸 Container Size	长 Length	308mm
	宽 Width	108mm
	高 Height	45mm

木门、铝合金门配件 Accessories for wooden doors and aluminum alloy doors

门扇调节 Door adjustment

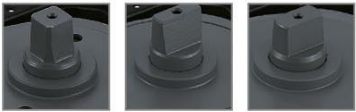


FLOOR SPRING
SERLES 地弹簧系列

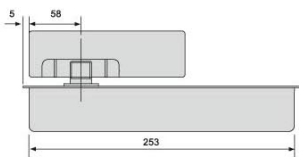
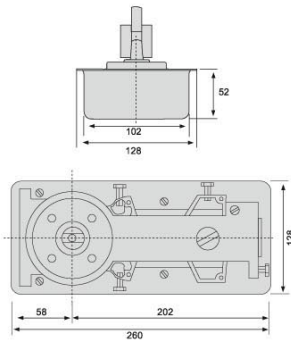
产品系列



VW-FS-62

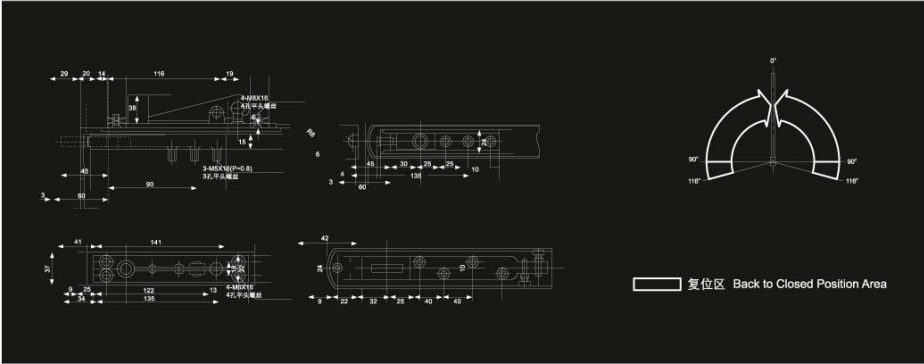


外观尺寸 Dimension of appearance



木门、铝合金门配件 Accessories for wooden doors and aluminum alloy doors

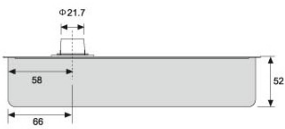
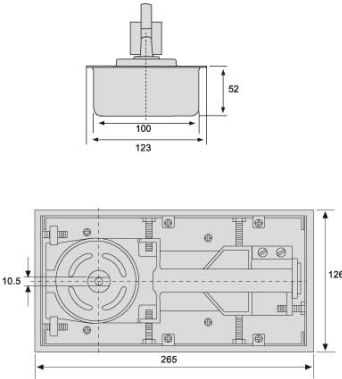
门扇调节 Door adjustment



VW-FS-63

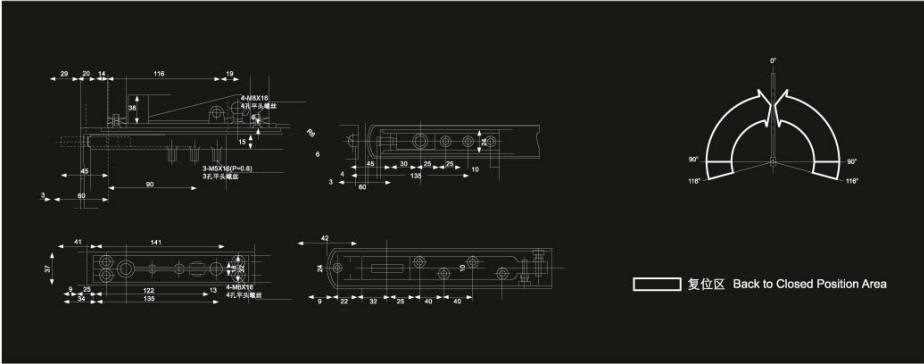


外观尺寸 Dimension of appearance



木门、铝合金门配件 Accessories for wooden doors and aluminum alloy doors

门扇调节 Door adjustment



技术数据 Technological data

功能特性 Feature	技术参数 Technological data	选项 Choice
闭门力量 Closing force	38Nm牛·顿米	—
适合最大门宽 Suitable for maximum wide door leaf	(宽) 900X(高) 2000mm	—
最大门重 The maximum bearing weight	95kg	—
闭门速度以调节阀控制 The door closed speed is controlled by the adjusting valve	—	●
定位 Opening angle	90°	●
重量 Weight	—	—
底座尺寸 Container Size	长 Length	250mm
	宽 Width	110mm
	高 Height	50mm

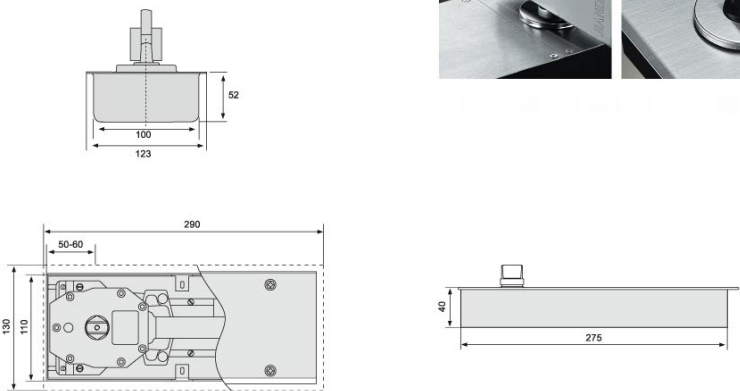
FLOOR SPRING
SERLES 地弹簧系列



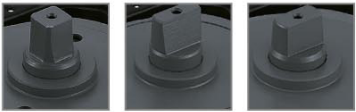
VW-FS-65



外观尺寸 Dimension of appearance



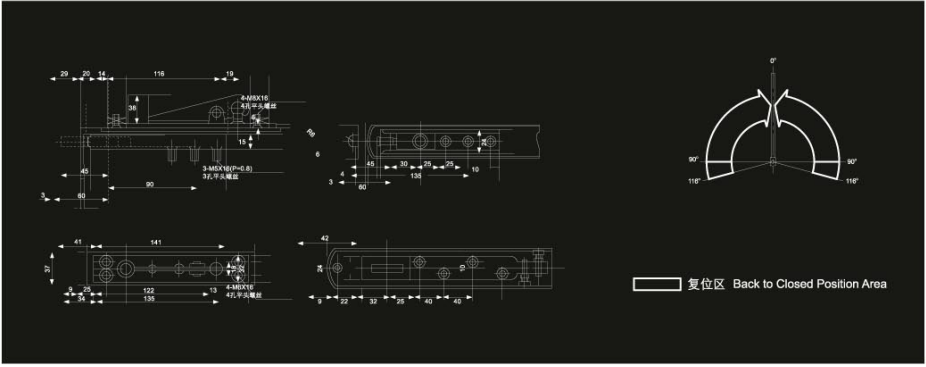
技术数据 Technological data



功能特性 Feature	技术参数 Technological data	选项 Choice
闭门力量 Closing force	38Nm牛·顿米	—
适合最大门宽 Suitable for maximum wide door leaf	(宽) 1200X(高) 2400mm	—
最大门重 The maximum bearing weight	120kg	—
闭门速度以调节阀控制 The door closed speed is controlled by the adjusting valve	—	●
定位 Opening angle	90°	●
重量 Weight	—	—
底座尺寸 Container Size	长 Length	290mm
	宽 Width	130mm
	高 Height	52mm

木门、铝合金门配件 Accessories for wooden doors and aluminum alloy doors

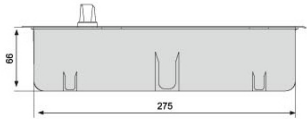
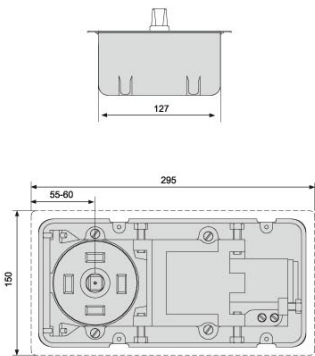
门扇调节 Door adjustment



VW-FS-73



外观尺寸 Dimension of appearance

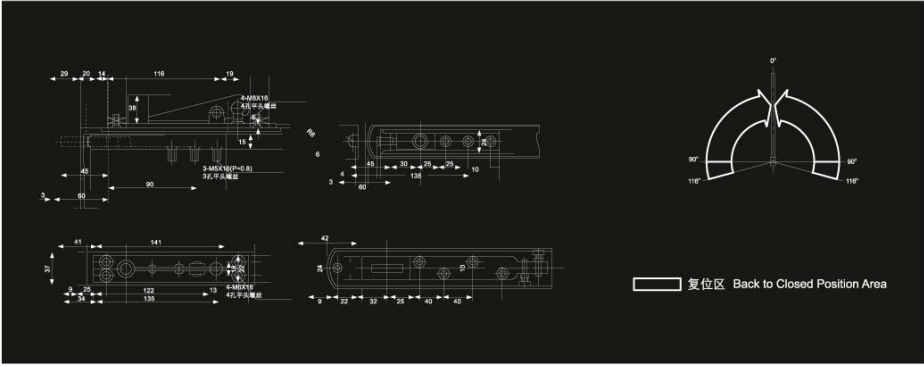


技术数据 Technological data

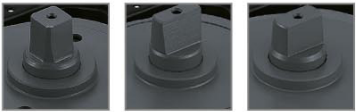
功能特性 Feature	技术参数 Technological data	选项 Choice
闭门力量 Closing force	38Nm牛·顿米	—
适合最大门宽 Suitable for maximum wide door leaf	1300mm	—
最大门重 The maximum bearing weight	130kg	—
闭门速度以调节阀控制 The door closed speed is controlled by the adjusting valve	—	●
定位 Opening angle	90°	●
重量 Weight	—	—
底座尺寸 Container Size	长 Length	295mm
	宽 Width	150mm
	高 Height	52mm

木门、铝合金门配件 Accessories for wooden doors and aluminum alloy doors

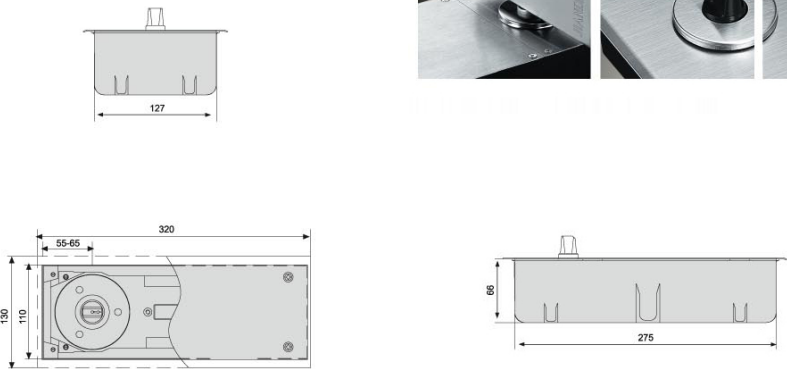
门扇调节 Door adjustment



VW-FS-84

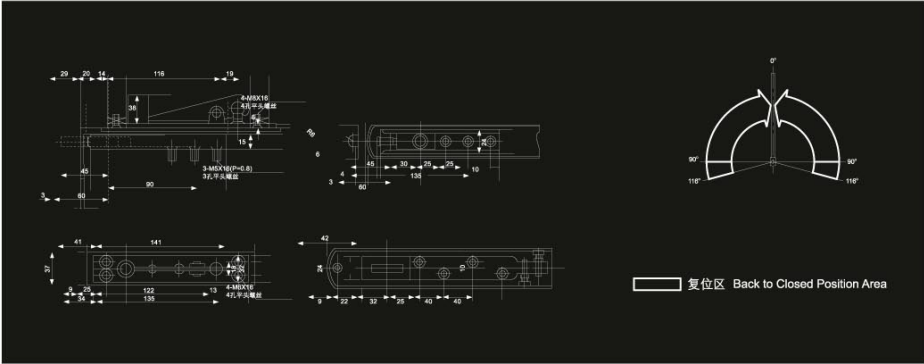


外观尺寸 Dimension of appearance



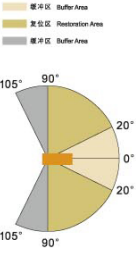
木门、铝合金门配件 Accessories for wooden doors and aluminum alloy doors

门扇调节 Door adjustment



FLOOR SPRING
SERLES 地弹簧系列

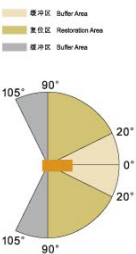
VW-FS-63



VW-FS-63-1

技术参数 Technical parameters:

序号No.	项目 ITEM	轻型 Light-duty	重型 Heavy-duty
1	使用温度范围 Range of temperature	-40°C~+40°C	-40°C~+40°C
2	开启定位偏差 Locating deviation of closing door	± 0.3°	± 0.3°
3	最大关闭时间 Maximum closing time	> 46s	> 46s
4	最小关闭时间 Minimum closing time	< 3s	< 3s
5	开启力矩 Opening moment	42N.m	42N.m
6	关闭力矩 Closing moment	16N.m	21N.m
7	承重范围(kg) Door weight	100kg	150kg
8	适合门最大宽 Max door width	115cm	130cm
9	适合门高 Door height	210-240cm	210-240cm
10	运行次数 Running times	不低于50万次 More than 500,000 cycle	不低于50万次 More than 500,000 cycle
11	使用时间 Guarantee	不低于2年 More than 2 years	不低于2年 More than 2 years



VW-FS-63-2

技术参数 Technical parameters:

序号No.	项目 ITEM	轻型 Light-duty	重型 Heavy-duty
1	使用温度范围 Range of temperature	-40°C~+40°C	-40°C~+40°C
2	开启定位偏差 Locating deviation of closing door	± 0.3°	± 0.3°
3	最大关闭时间 Maximum closing time	> 46s	> 46s
4	最小关闭时间 Minimum closing time	< 3s	< 3s
5	开启力矩 Opening moment	42N.m	42N.m
6	关闭力矩 Closing moment	16N.m	21N.m
7	承重范围(kg) Door weight	100kg	150kg
8	适合门最大宽 Max door width	115cm	130cm
9	适合门高 Door height	210-240cm	210-240cm
10	运行次数 Running times	不低于50万次 More than 500,000 cycle	不低于50万次 More than 500,000 cycle
11	使用时间 Guarantee	不低于2年 More than 2 years	不低于2年 More than 2 years

Accessories 安装配件

VW-FS-63-1

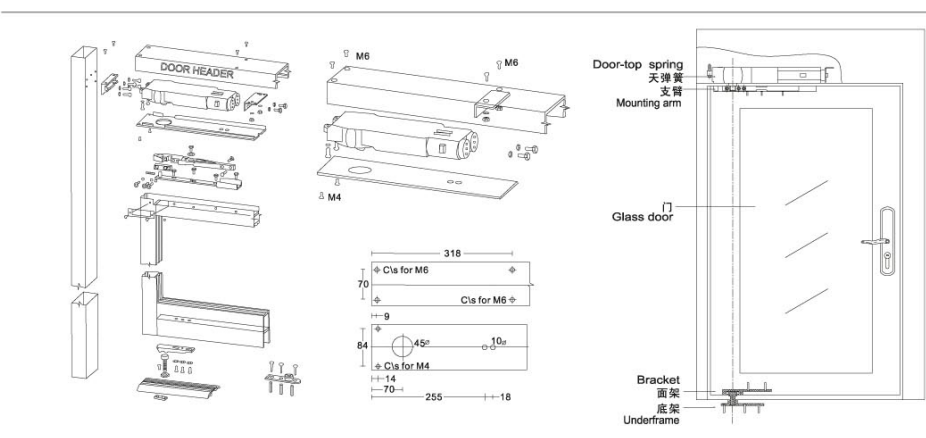


Accessories 安装配件

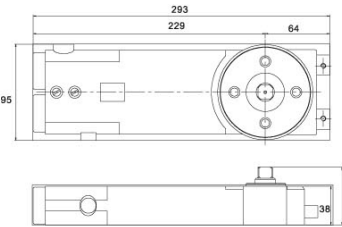
VW-FS-63-2



安装示意图 Installation instruction



外形尺寸图
Outline dimensional drawing



解剖示意图
Sketch map of dissection



技术资料 Technical data

- 1、机体采用优质防冻液压油，确保在不同温度下机件运转平稳、灵活。
Filled with high quality anti-icing hydraulic oil,ensuring smooth and flexible operation of mechanical parts at different temperatures.
- 2、门开启角度高达105度方向选择。
Door opening angel at 105° at your option.
- 3、可选用90度有止动装置或无止动装置。
90° Stop device or non-stop device at your option.
- 4、105度至0度两个闭门速度调控阀，以配合不同闭门效果。
With double closing speed adjusting valves at 105° ~0° to match different closing purposes.
- 5、通用型设计，适合左右手及单双开启门扇，各使用方式均备有完整配件。
General designed is suitable for opening doors with left/right hand and single/double opening,accessories are available for each usagemode.